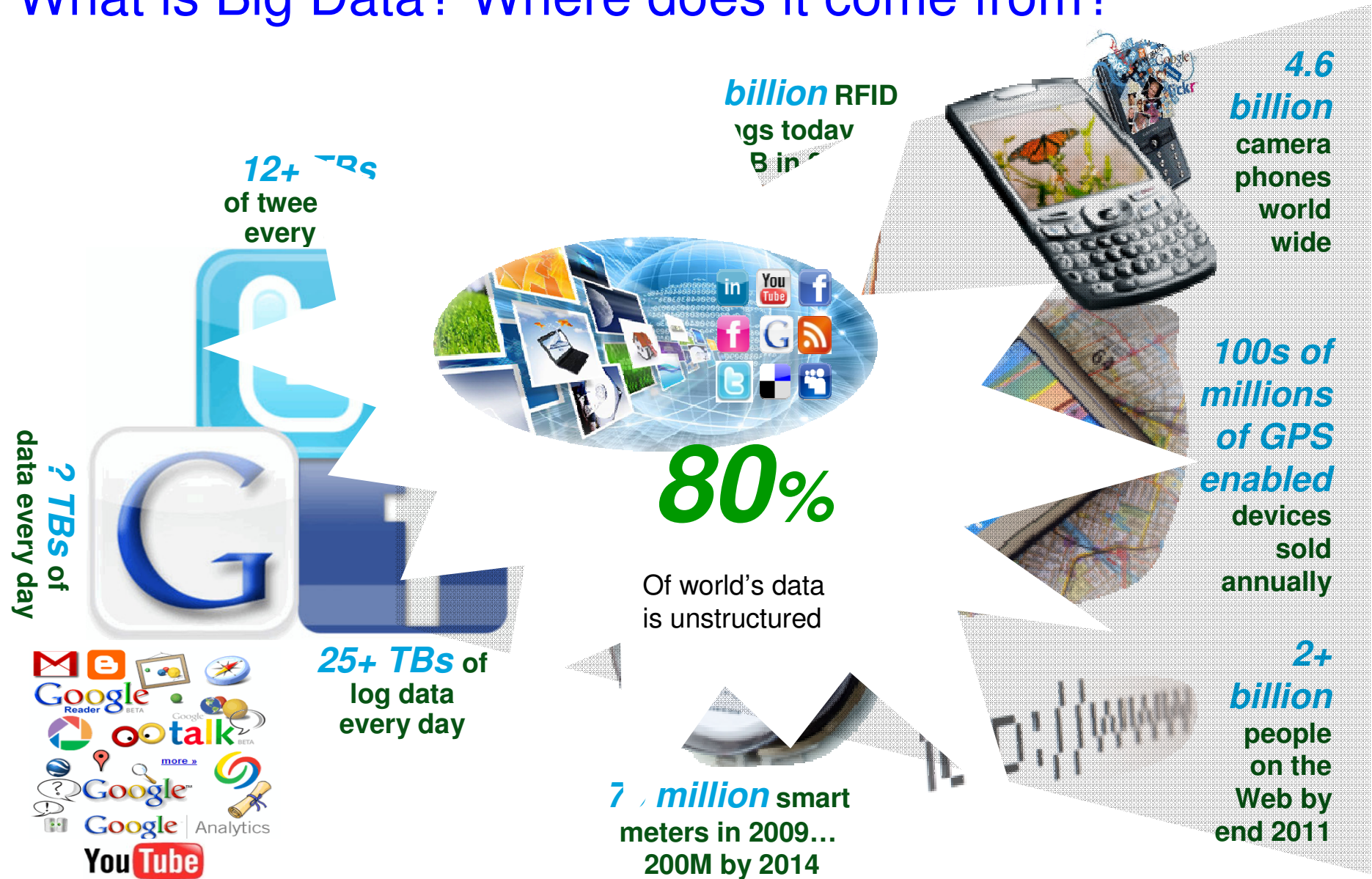


# Exploiting Data at Rest and Data in Motion with a Big Data Platform



Sarah Brader, [sarah\\_brader@uk.ibm.com](mailto:sarah_brader@uk.ibm.com)

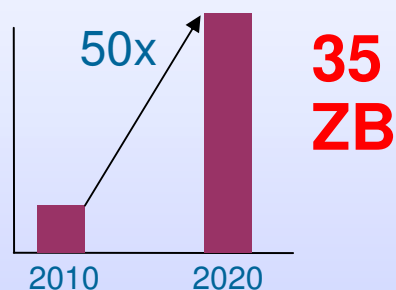
# What is Big Data? Where does it come from?



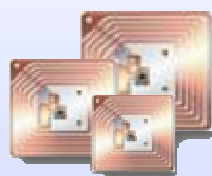
## Characteristics of Big Data

*Extracting insight from an immense volume, variety and velocity of data, in context, beyond what was previously possible.*

Cost efficiently processing the growing **Volume**

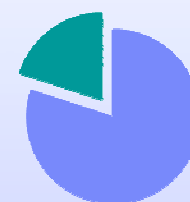


Responding to the increasing **Velocity**



**30 Billion**  
RFID  
sensors and  
counting

Collectively Analyzing the broadening **Variety**



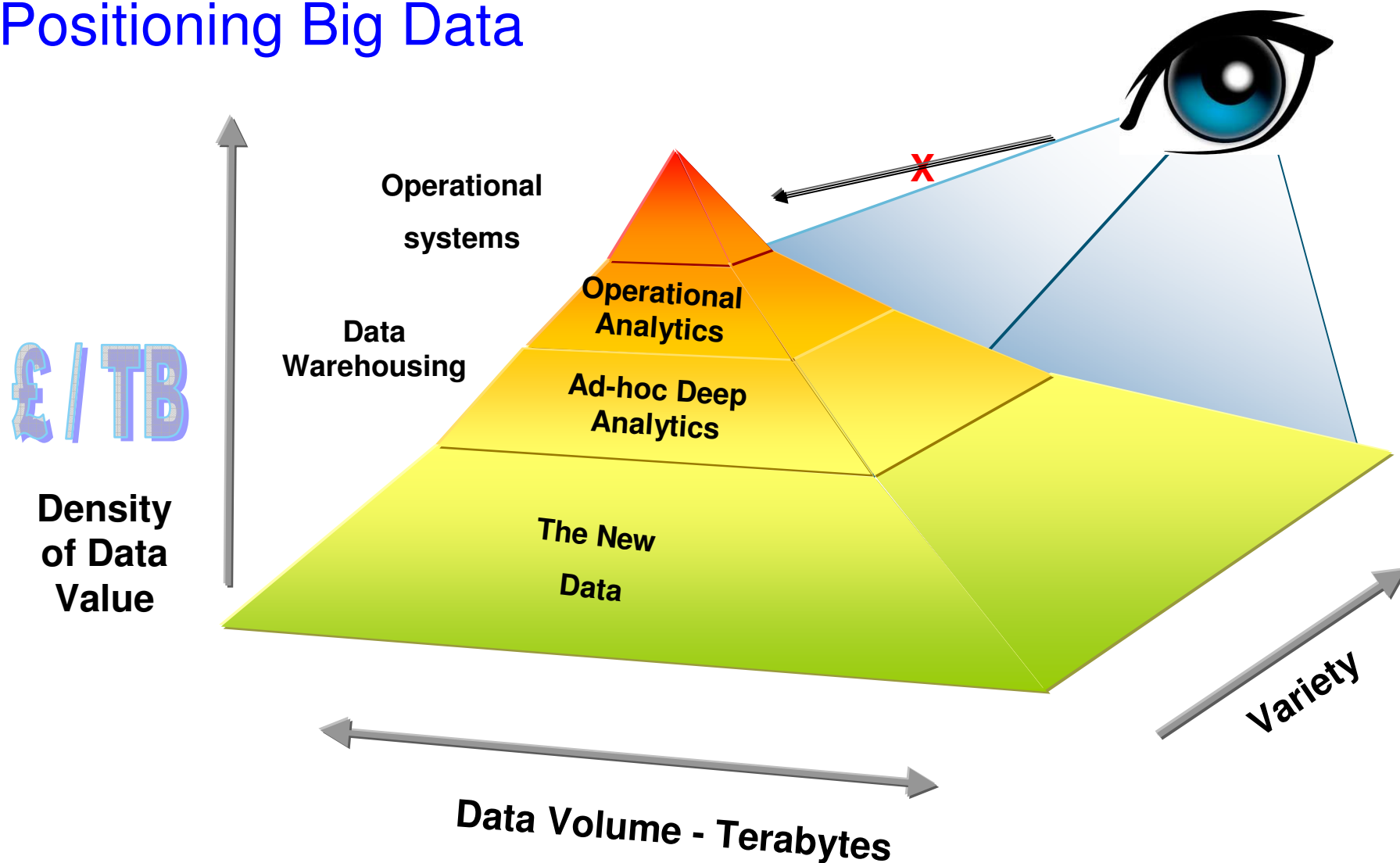
**80%** of the  
world's data is  
unstructured



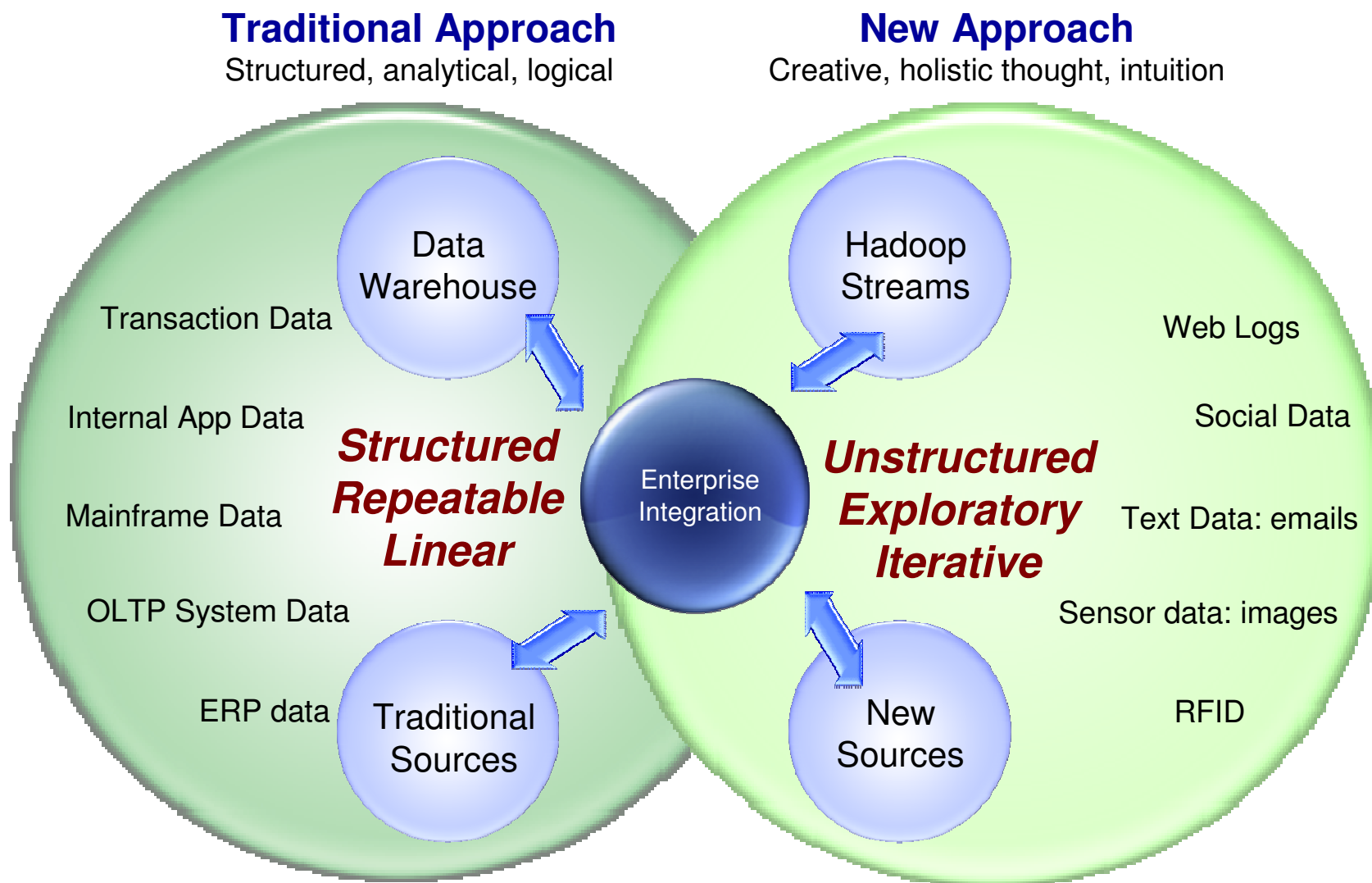
Establishing the **Veracity** of big data sources

**1 in 3** business leaders don't trust the information they use to make decisions

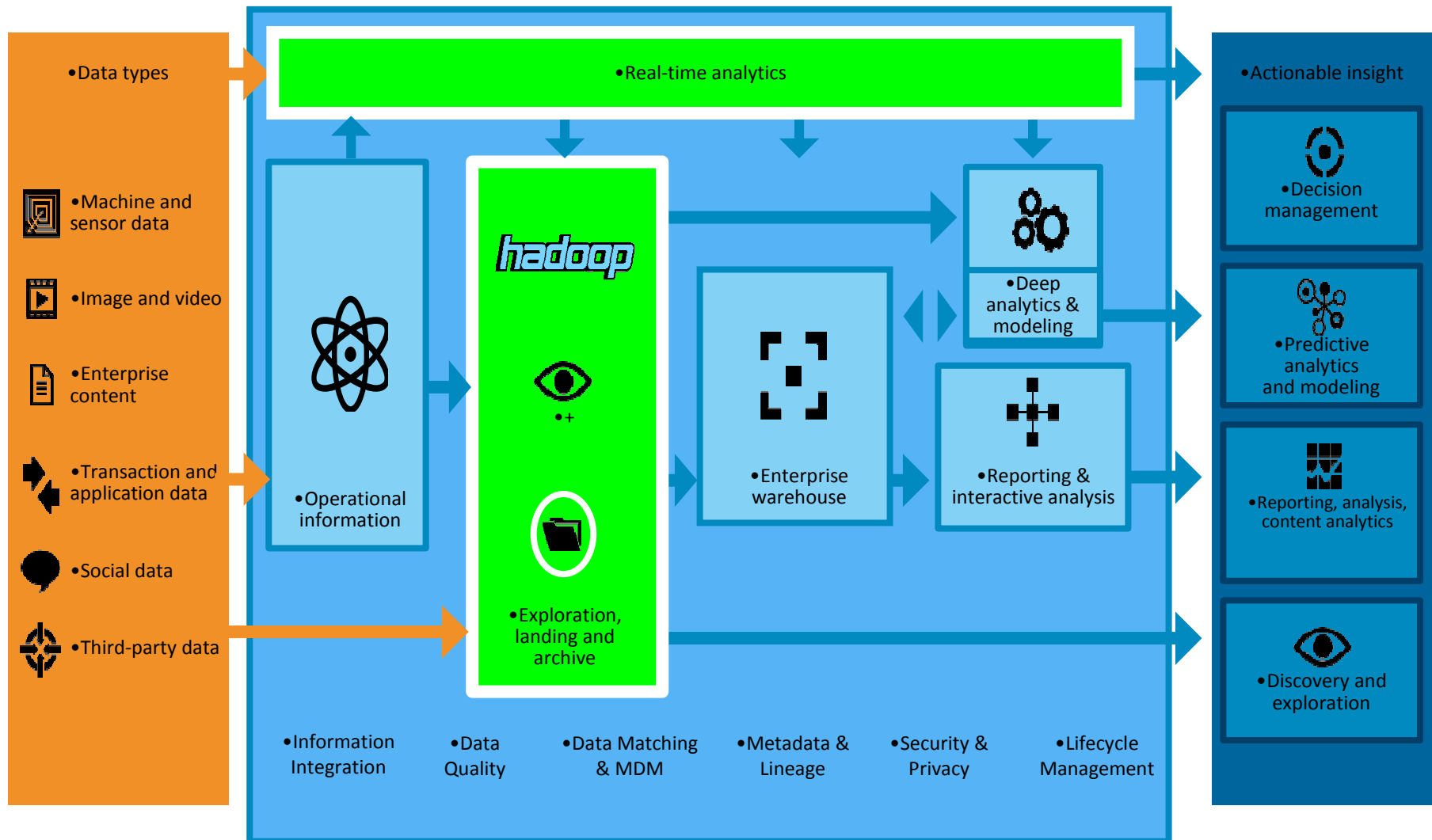
# Positioning Big Data



# A New Approach for Big Data

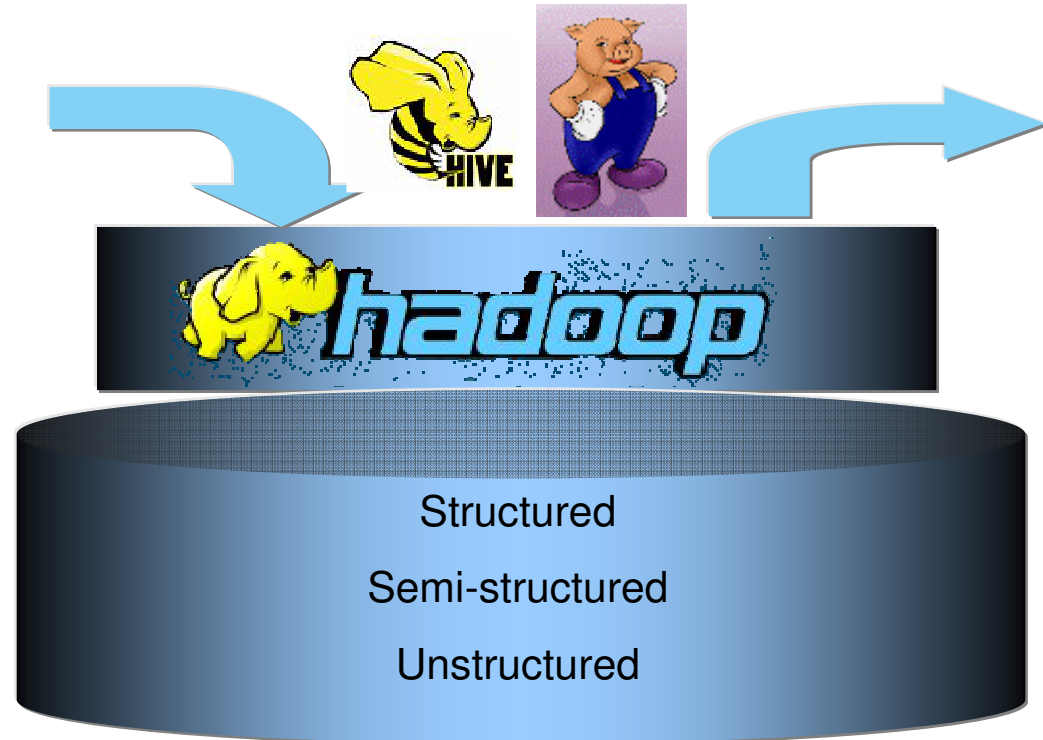


# IBM's Next Generation Big Data Architecture



# Hadoop Technology

- Volume
  - Scales to many petabytes
  - Scales to thousands of nodes
- Variety
  - Structured
  - Semi-structured
  - Unstructured
- Experimental analytics
  - Apply structure on read
  - Rapid exploitation of new data



# Hadoop ++ InfoSphere BigInsights



- Based on Apache Open Source
  - Integrates with OEM tech
  - Applications developed elsewhere run without change
  
- Ease of use
  - Skills in SQL, R etc are instantly usable
  - Complexities of MR are hidden
  
- Enterprise capabilities
  - Security
  - Disaster Recovery
  - Supports workload isolation

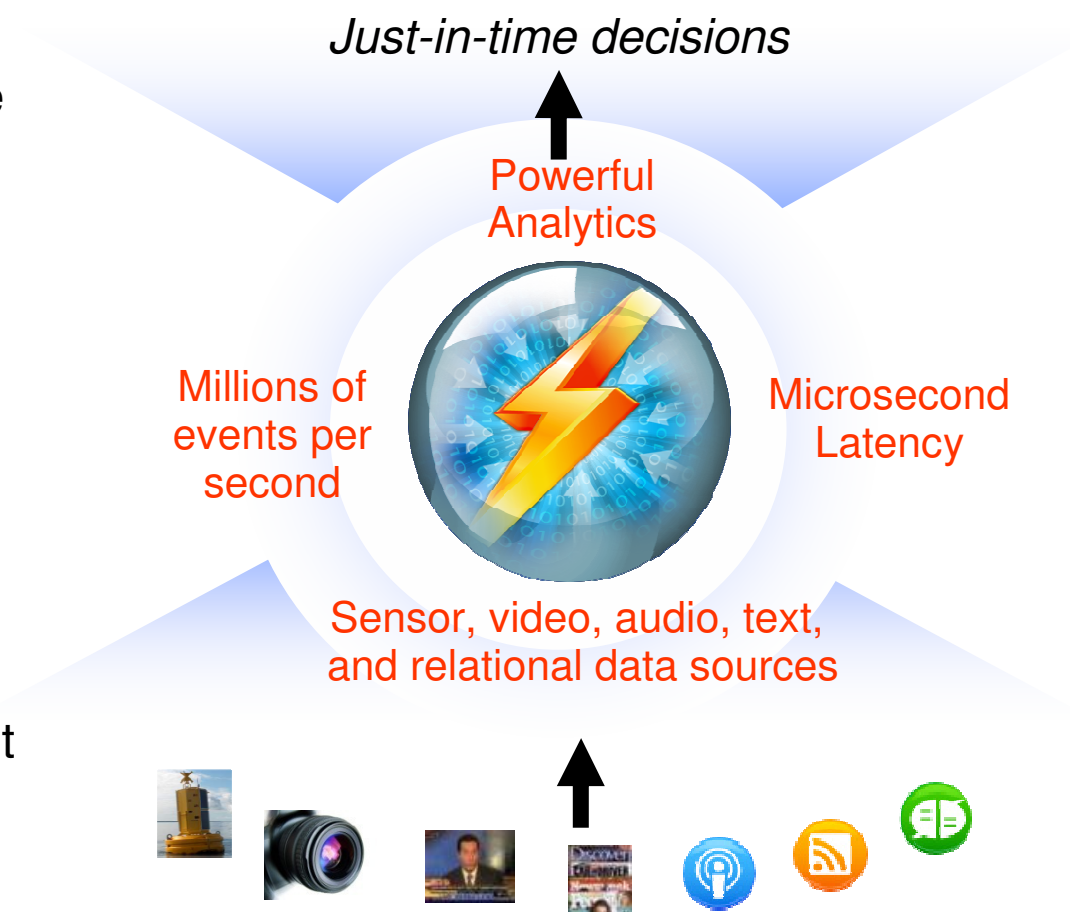




# IBM InfoSphere Streams

## A platform for real-time analytics on BIG data

- **Volume**
  - Gigabytes per second or more
  - Terabyte per day or more
- **Variety**
  - All kinds of data
  - All kinds of analytics
- **Velocity**
  - Insights in microseconds
- **Agility**
  - Dynamically responsive
  - Rapid application development



# What kinds of analysis is Streams used for?

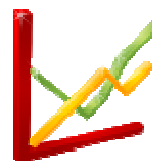


## Telephony

- CDR processing
- Social analysis
- Churn prediction
- Geomapping

## Stock market

- Impact of weather on securities prices
- Analyze market data at ultra-low latencies



## Law Enforcement, Defense & Cyber Security

- Real-time multimodal surveillance
- Situational awareness
- Cyber security detection



## Transportation

- Intelligent traffic management



## Fraud prevention

- Detecting multi-party fraud
- Real time fraud prevention



## Smart Grid & Energy

- Transactive control
- Phasor Monitoring Unit

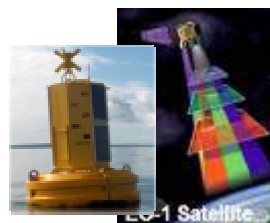
## e-Science

- Space weather prediction
- Detection of transient events
- Synchrotron atomic research



## Health & Life Sciences

- Neonatal ICU monitoring
- Epidemic early warning system
- Remote healthcare monitoring

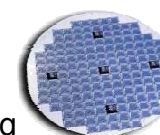


## Natural Systems

- Wildfire management
- Water management

## Other

- Manufacturing
- Text Analysis



# How Streams Works

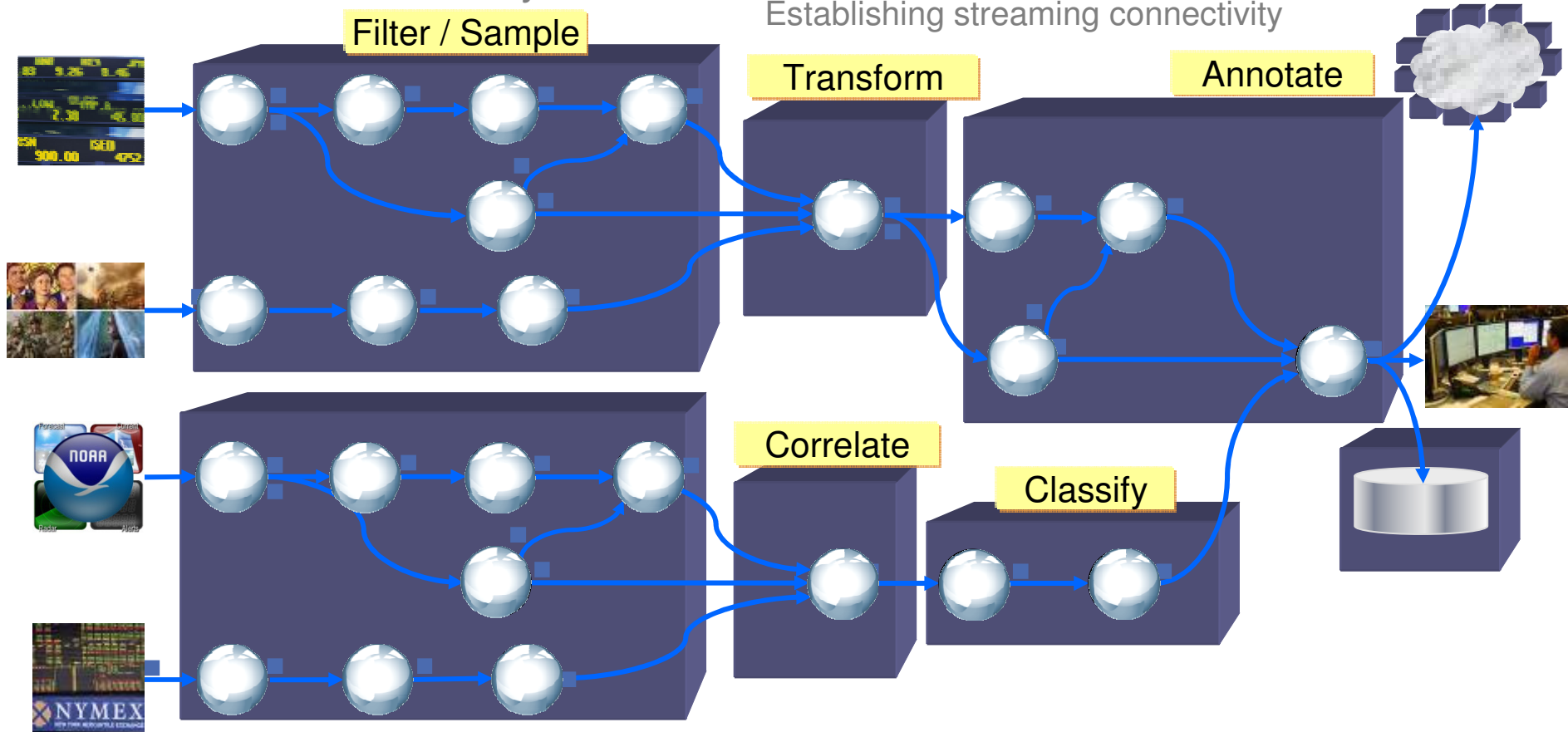
- Continuous ingestion
- Continuous analysis



# How Streams Works

- Continuous ingestion
- Continuous analysis

Infrastructure provides services for  
Scheduling analytics across hardware hosts,  
Establishing streaming connectivity



Achieve scale:

- By partitioning applications into software components
- By distributing across stream-connected hardware hosts

Where appropriate:

- Elements can be *fused* together for lower communication latency

## Further Information

### ■ Resources

- Visit IBMBigDataHub for conversations
  - [www.ibmbigdatahub.com](http://www.ibmbigdatahub.com)
- Visit BigDataUniversity for technical education
  - [www.bigdatauniversity.com](http://www.bigdatauniversity.com)
- InfoSphere BigInsights 2.1.2 Knowledge Center
  - [http://www-01.ibm.com/support/knowledgecenter/SSPT3X\\_2.1.2/com.ibm.swg.im.infosphere.biginsights.welcome.doc/doc/welcome.html](http://www-01.ibm.com/support/knowledgecenter/SSPT3X_2.1.2/com.ibm.swg.im.infosphere.biginsights.welcome.doc/doc/welcome.html)
- InfoSphere Streams Knowledge Center
  - [http://www-01.ibm.com/support/knowledgecenter/SSCRJU/SSCRJU\\_welcome.html?lang=en](http://www-01.ibm.com/support/knowledgecenter/SSCRJU/SSCRJU_welcome.html?lang=en)
- Watson Explorer Knowledge Center
  - [http://www-01.ibm.com/support/knowledgecenter/SS8NLW/SS8NLW\\_welcome.html?lang=en](http://www-01.ibm.com/support/knowledgecenter/SS8NLW/SS8NLW_welcome.html?lang=en)

## Try it now! InfoSphere for BigInsights Quick Start

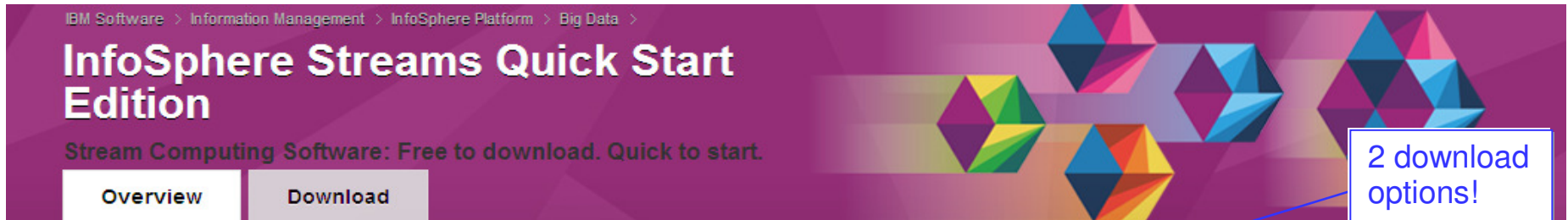


- Free, no limit, non-production version of BigInsights
- Features Big SQL, BigSheets, Text Analytics, Big R, management console, development tools
- Tutorials and education available
- <http://www.ibm.com/developerworks/downloads/im/biginsightsquick/>

# How Can You Get Quick Start?

[ibm.co/streamsq](http://ibm.co/streamsq)

<http://www.ibm.com/software/data/infosphere/streams/quick-start/>



## Real Time Analytic Processing at your fingertips

Stream processing technology gives you the ability to analyze massive data volumes quickly, often in real time, and turn data into actionable insight.

InfoSphere Streams is an advanced computing platform that can quickly ingest, analyze and correlate information as it arrives from thousands of real-time sources. Because it can handle high throughput rates, InfoSphere Streams can analyze millions of events per second, enabling sub-millisecond response times and instant decision-making.

Now you can get your hands on this technology with InfoSphere Streams Quick Start Edition, a **free**, downloadable, non-production version.

With InfoSphere Streams Quick Start Edition, there is **no data capacity** and **no time limitation**, so you can experiment with large data sets and work with different use cases, on your own timeframe.

**NOTE:** InfoSphere Streams Quick Start Edition does not come with a support option. To explore your support options, visit the [InfoSphere Streams](#) product page.

### Download now!



**InfoSphere Streams Quick Start Edition Native Software Installation**



**InfoSphere Streams Quick Start Edition VMware Image**

There are 2 download options available. Choose the native software option to download Quick Start onto your machine. Choose the VMware image for a virtual machine option to get started with Quick Start even faster.

### Blogs

- [IBM developerWorks Big Data](#)
- [IBM developerWorks Streams](#)
- [Streams Blog on developerWorks](#)
- [Stream Processing on Smarter Computing](#)
- [IBM Big Data hub](#)

Thank  
YOU